

meters uk Ltd

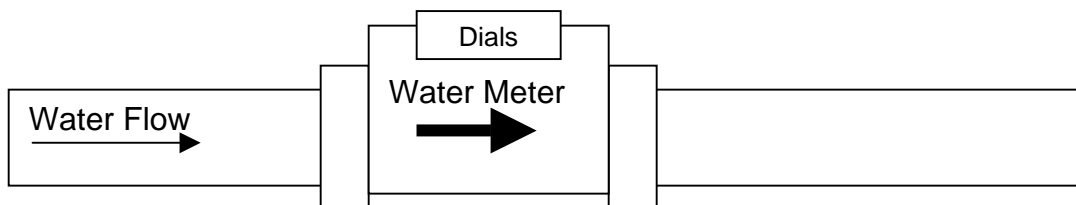
Utility Meter Manufacturers

ELECTRICITY – GAS – HEAT – WATER METERS

TOMi - Water Meter – Installation Instructions

Cold – Maximum Operating Temperature 40c

Hot – Maximum Operating Temperature 90c



Ensure water flow and arrow on meter are in the same direction

Suitable for Horizontal or Vertical Installation (Water flow in vertical installation must be downwards only—or a fully filled system)

Before installing -- Please ensure that pipes are free from any debris

All meters should be installed with the flow direction as indicated on the water meter, and be covered by insulation appropriate to their location.

Guarantee : - The company guarantees the product for a period of 1 year, for fair wear and tear of the product. The guarantee is strictly on a return to base basis and subject to the company terms and conditions of sale www.meters.co.uk/policy.htm

Meter with pulsed outputs – wiring --- Pulsed Output from TOMi is Volt Free

Blue = common

Black = Pulse 1 (-) To the - pulse input terminals of your equipment

Red = Pulse 2 (+) To the + pulse input terminal of your equipment

Wiring & Requiring to Introduce a Voltage

Maximum Voltage that can be introduced = 12vdc

Example Of Connection

Red to pulse input plus a link to + of voltage introduced

Blue to – terminal of voltage introduced

Pulse Value Tomi Meters

Size

15mm/ 1/2"

20mm/ 3/4"

25mm/ 1"

30mm/ 1. 1/4"

40mm/ 1. 1/2"

50mm/ 2"

Pulse Value

1 pulse per 1 litre

1 pulse per 1 litre

1 pulse per 1 litre

1 pulse per 10 litres

1 pulse per 10 litres

1 pulse per 100 litres

meters uk Ltd

Utility Meter Manufacturers

Whitegate, White Lund Trading Estate, Lancaster,
Lancashire, England, LA3 3BT

Tel +44 1524 555929 Fax + 44 1524 847009

sales@meters.co.uk



Authorised User No. 00475



www.meters.co.uk