

# meters uk Ltd

Utility Meter Manufacturers

ELECTRICITY - GAS - HEAT - WATER METERS

Water Meters 50mm to 500mm  
MAXi Range - Flanged To PN16

Cold & Hot Water Meters

Muti Jet Dry Dial - Woltmann

- ✓ Manufactured to ISOEN 4064
- ✓ Class B
- ✓ Long Term Clear Reading - Frost Resistant
- ✓ Cold Meters Max Temperature 40c
- ✓ Hot Meters Max Temp 90c
- ✓ Water Pressure 16 bar
- ✓ Anti magnetic security pulsed output
- ✓ Suitable for both Billing & Monitoring applications



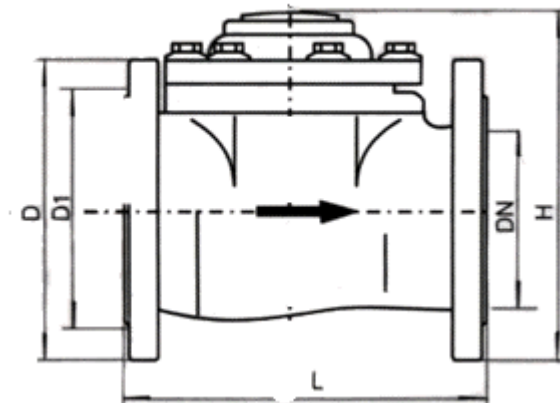
www.meters.co.uk

## MAXi Range – Water Meters – Technical Data

Size	QS Max Flow	QP Nominal Flow	Min Reading	Max Reading	Length mm L	Height mm H	Width mm	Connecting Flange - mm			Wt Kg
								1	2	3	
50mm	30	1.5	0.01	999999	200	255.8	192	192	125	4*M16	12
65mm	50	25	0.01	999999	200	242	195	195	145	4*M16	13
80mm	80	40	0.01	999999	225	275.8	200	200	160	8*M16	16
100mm	120	60	0.01	999999	250	285.8	220	220	180	8*M16	18
125mm	200	100	0.01	999999	250	275	250	250	210	8*M16	20
150mm	300	150	0.1	999999	300	345.3	285	285	240	8*M16	42
200mm	500	250	0.1	999999	350	372.5	340	340	295	12*M20	64
250mm	800	400	1.0	999999	450	492.8	395	395	350	12*M20	94
300mm	1200	600	1.0	999999	500	515.8	445	445	400	16*M24	140
400mm	2000	1000	1.0	999999	600	630.8	565	565	515	16*M24	199
500mm	3000	1500	1.0	999999	800	738.5	620	620	620	20*M24	340

Sizes

maxi - water meter



meters uk Ltd, Whitegate, White Lund Trading Estate, Lancaster, Lancashire LA3 3BT

Tel: 01524 555929 Fax: 01524 847009 sales@meters.co.uk



# meters uk Ltd

Utility Meter Manufacturers

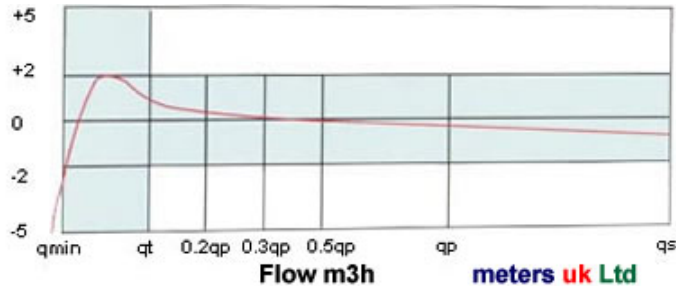
ELECTRICITY - GAS - HEAT – WATER METERS

Construction – Cast Iron – coated epoxy interior - replaceable vacuum sealed dry dial module – snug fit plastic cap.

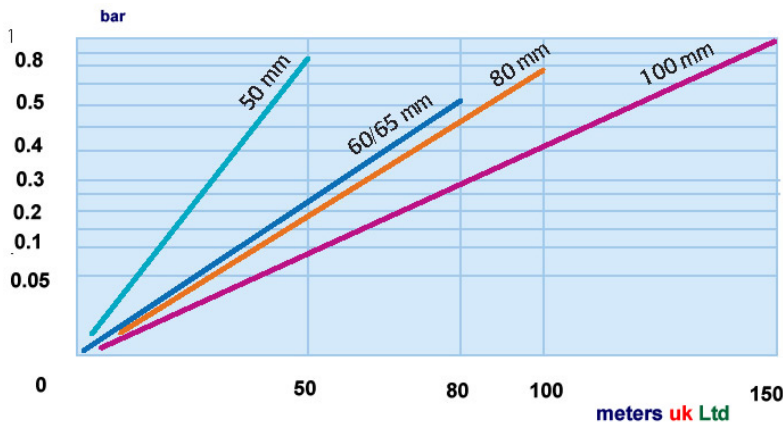
Sealing Points – On body and couplings

pH Scales – Suitable for liquids in the 5 to 8 range of the ph scale

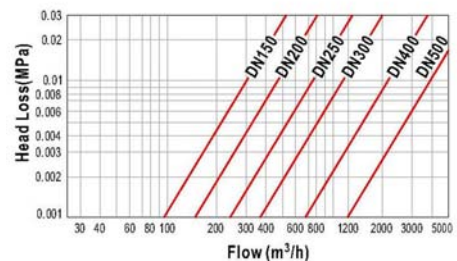
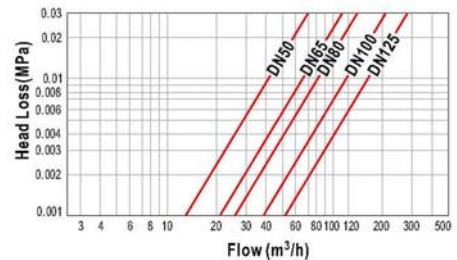
## Error Curve



## Head Loss Curve



## Head Loss Curve



## Pulsed Output Data

- ✓ Historically highly reliable
- ✓ Located for ease of installation on top meter

Anti magnetic volt free contact – (Reed Switch)

Temperature Range – Flexing -5c to +50c

Temperature Range – Static -20c to +70c

Bending Radius 10x Cable Diameter

Electrical Characteristics

Cross Section 24/0.22 AWG/mm2

Insulation Resistance 20 (min) Mohm km

Pulsed Output from MAXi is Volt Free

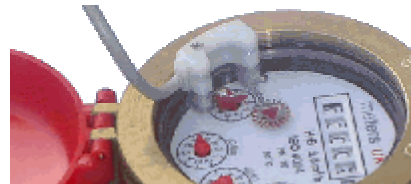
3 wires

Blue = common

Black = Pulse 1 (-) To the - pulse input terminals of your equipment

Red = Pulse 2 (+) To the + pulse input terminal of your equipment

Maximum Voltage that can be introduced = 12vdc



www.meters.co.uk



meters uk Ltd, Whitegate, White Lund Trading Estate, Lancaster, Lancashire LA3 3BT

Tel: 01524 555929 Fax: 01524 847009 sales@meters.co.uk



# meters uk Ltd

Utility Meter Manufacturers

ELECTRICITY - GAS - HEAT – WATER METERS

## Pulse Value

Size	Litres Per Pulse (As Standard)	Litres Per Pulse (Other values Available)
50,65,80,100,125 mm	100	10
150,200	1,000	100
250,300,400,500mm	10,000	

www.meters.co.uk



meters uk Ltd, Whitegate, White Lund Trading Estate, Lancaster, Lancashire LA3 3BT  
Tel: 01524 555929 Fax: 01524 847009 [sales@meters.co.uk](mailto:sales@meters.co.uk)

