

# Installation And Operational Instructions

## RCU 1 & RCU 6

Displays Up To 6 Utility Meter Totals  
in Standard Utility Values

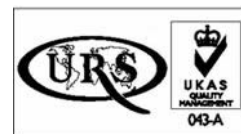
Zero Display Option ( Resettable Display)

Manufactured to ISOEN 60950



www.meters.co.uk

Installation Instructions



Certificate No. 2030

## Utility Meter – Remote Counter Unit

### Installation Instructions – Programming

#### The RCU6

Is a 1 or 6 channel remote counter for utility meters

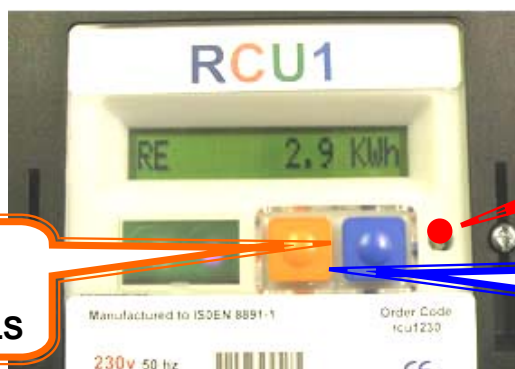
It collects a pulse from a pulsed output utility meter and has the ability to configure the readings in standard format (KWh / m3h etc)

With the use of a zapper the counters/dials can be zeroed [www.meters.co.uk/zapper.htm](http://www.meters.co.uk/zapper.htm)

#### Mounting

The RCU is designed for wall mounting, a screw case hanging position is located at the top centre of the case with two wall fixing positions located under the terminal cover.

#### Important



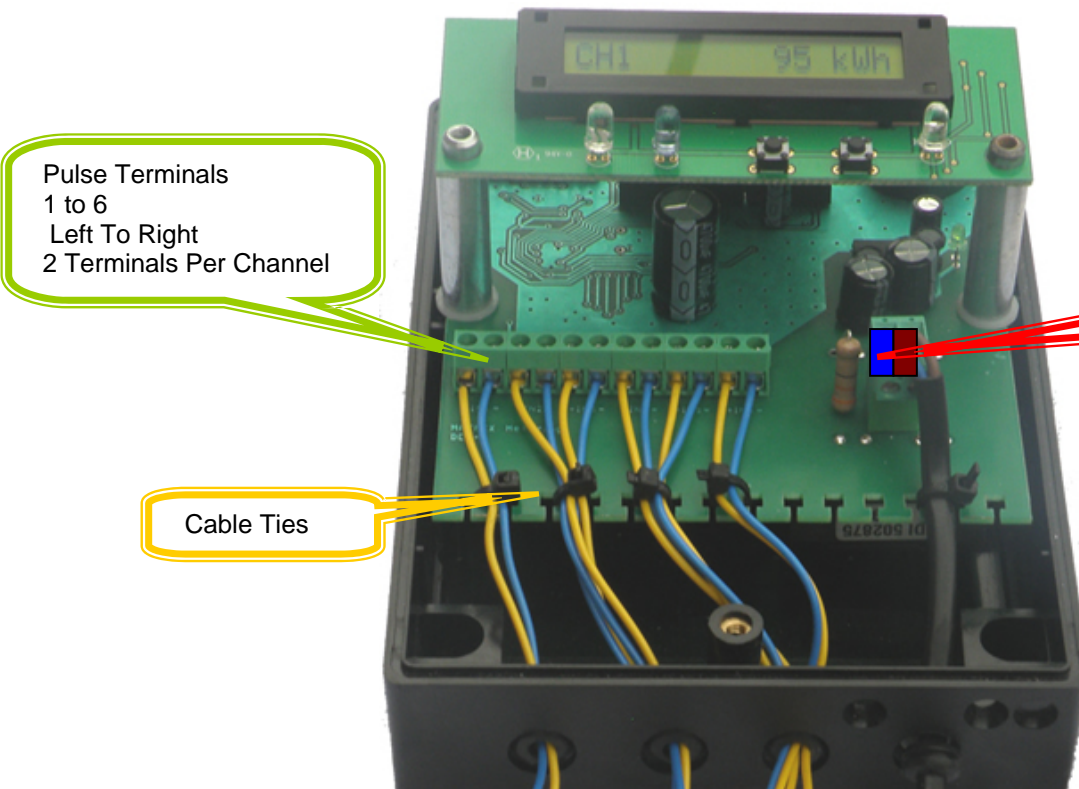
Orange Button  
SCROLLS

Blue Button  
ACCEPTS

Red LED  
Flashes  
When A  
Pulse Is  
Received

#### Wiring Terminal List

Remove the meter front cover to expose wiring terminals



Pulse Terminals  
1 to 6  
Left To Right  
2 Terminals Per Channel

Cable Ties

Mains  
230 volts  
(or 24 v)

## Utility Meter – Remote Counter Unit

### Installation

**It is strongly recommended that the cabling doesn't run alongside power cables**

Remove RCU6 cover and install all wiring **supply is 230v or 24v**

Wiring standards must conform to IEE regulations

It is recommended to use shielded cable manufactured to BS4360 Class 5 or VDE0295 Class 5

Ideal cable – Unshielded – Twisted Pair – Speaker Cable

( example ) <http://www.batt.co.uk/products/view/597/Single-Pair-Unshielded-Cable,-8471,-8205>

### Programming RCU

At Boot up - Sequence

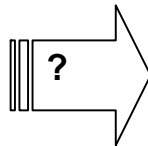
Matrix Metering

Software Version

**Scroll (Left/Orange Button ) and Accept with (Right/Blue Button)**

1<sup>st</sup> Screen Set

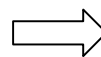
CH1 kWh m3h nil



**CH1** = Channel No  
**kWh** = Kilowatt Hours  
 Used in Electricity- Heat – Gas Sometimes  
**m3h** = Used In Gas & Fluids (Water)  
**Nil** = Use this if none of the above are required

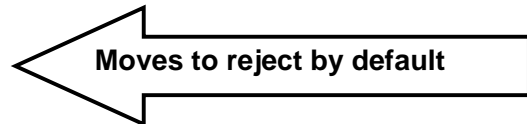
RCU 1– Programming Complete  
 RCU 6 – Program in Channels 2 to 6 in exactly the same format

Setting Check



Example CH1 0010 imp /kw  
 = CH1 10 pulses per kWh

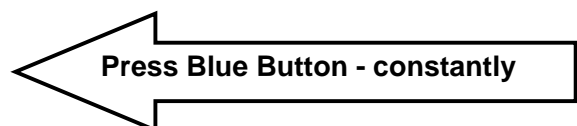
Reject



Accept



Hold To Save



**Utility Meter – Remote Counter Unit**

**Save**

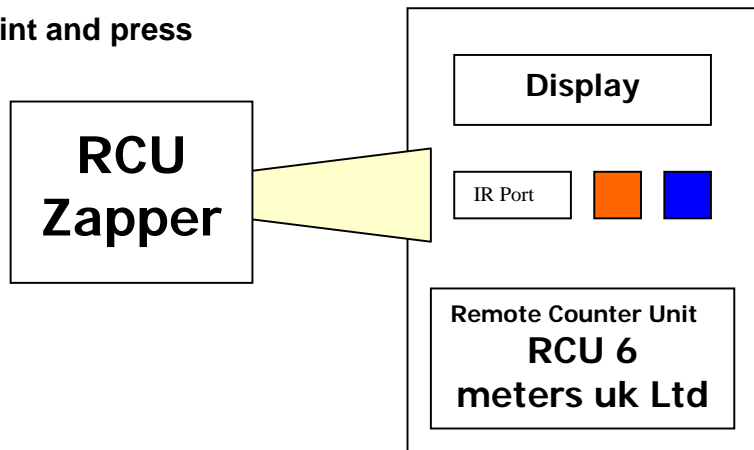
**Settings now saved**

**To Change Settings**

Once the settings have been – the only way to access the settings is with a Zapper Unit Reference [www.meters.co.uk/rcuzapper.htm](http://www.meters.co.uk/rcuzapper.htm)

This can only be achieved with use of a RCU Zapper

Point zapper at RCU Infra Point and press



**RCU– Enclosures**

**High Quality  
Heavy Duty**

Suitable for both Internal & External Mounting

**High Impact Resistant  
IP67 Rated**



**Order Code VW302517**

**Size H 300x W 250x D 170 – External**

**H 270x W 240x D 130 – Internal**

**Plexiglass Viewing Window to BS EN 100**